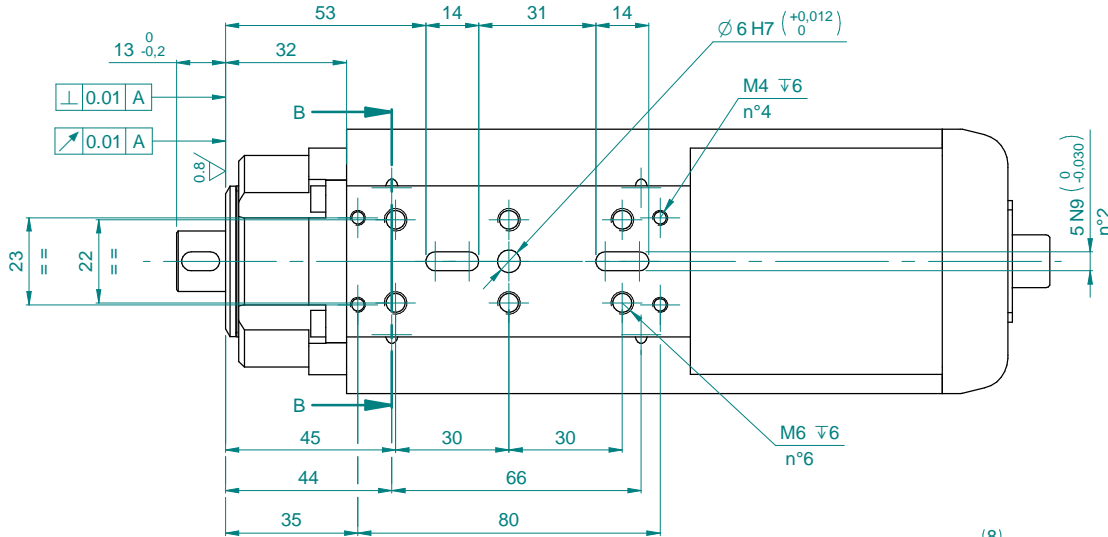
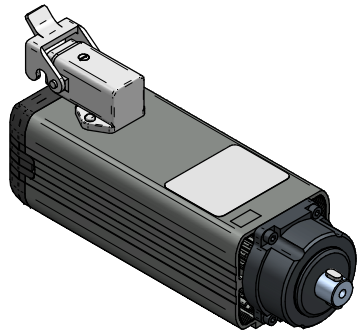
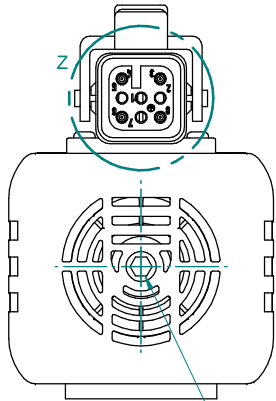
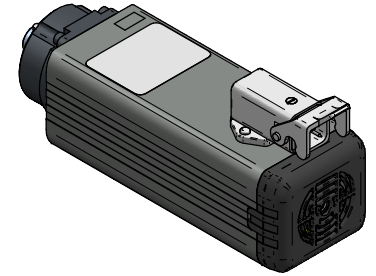
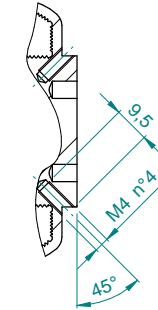


SPECIFICHE TECNICHE													
CODICE	POTENZA ALBERO	COPIA	TENSIONE NOMINALE	CORRENTE NOMINALE	POTENZA ELETTRICA	FREQUENZA NOMINALE	RPM NOM	RPM MAX	RENDIMENTO	FATTORE DI POTENZA	SERVIZIO	CLASSE DI ISOLAMENTO	IP
29L0482903C	0.65 kW	0.52 Nm	220 V	3 A	0.8 kW	200 Hz	12000 rpm	12000 rpm	0.8	cos(φ) = 0.7	S1	F	54

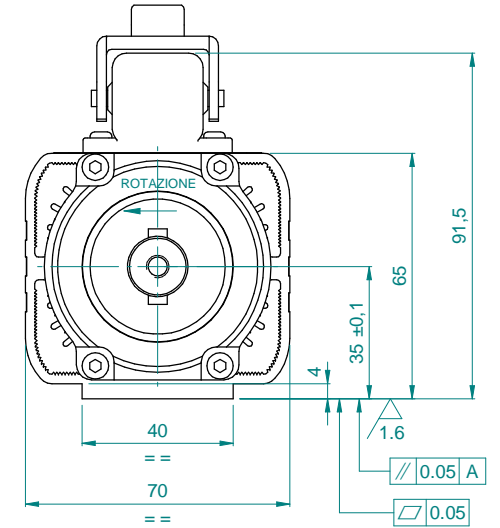
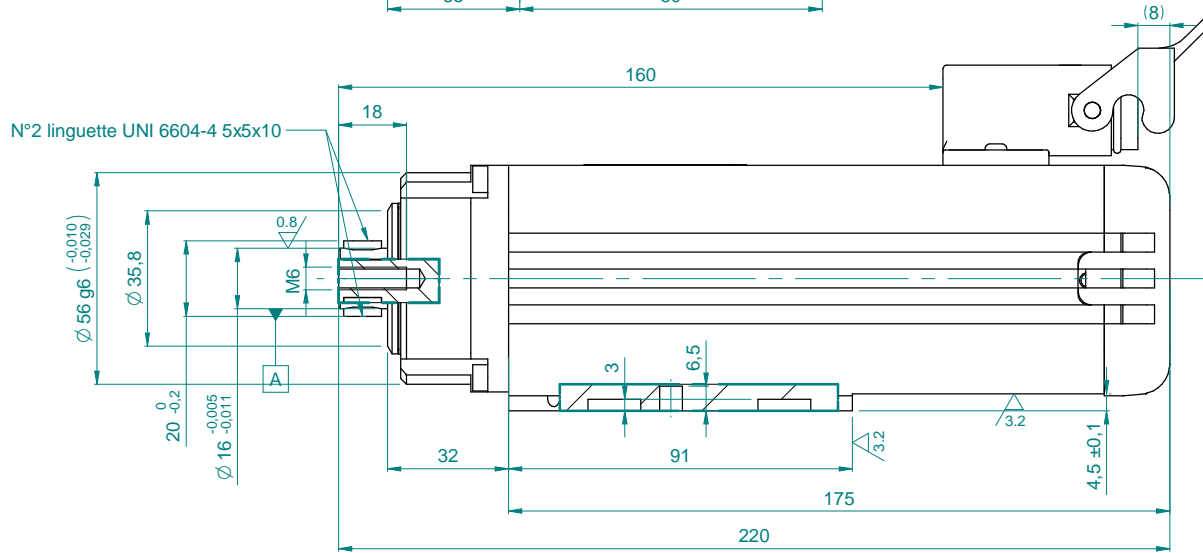
LOCALIZZAZIONE FORI:  $\pm \phi 0.1$



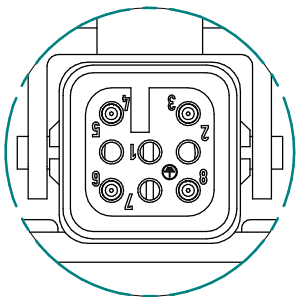
SEZIONE B-B



Sede per chiave esagonale da 5 mm



DETTAGLIO Z



POTENZA - POWER		
PIN	DESCRIZIONE - DESCRIPTION	COLORE - COLOR
3	U - FASE MOTORE - PHASE MOTOR	Marrone - Brown
4	V - FASE MOTORE - PHASE MOTOR	Blu - Blue
6	W - FASE MOTORE - PHASE MOTOR	Nero - Black
GND	GND	Giallo-Verde - Yellow-Green

Firma / Signature		Data / Date	
Controllato / Checked by		Data / Date	Firma / Signature
Disegnato / Designed by		Descrizione ultima modifica / Last change description	
Denominazione / Item Name			
<b>MOTM XS-1 0.65/12 12 D16 L13</b>			
Scala / Scale	Codice / Item ID	Rev	Status
<b>1:1,4</b>	<b>29L0482903C</b>	<b>02</b>	<b>1/2</b>